

ZOMBITRONICA

PROPOSITIONS D'IDÉES

20 08 2024

ROMAIN SEGAUD

▶ ● ↺ ↻ 123 BPM ▲

CHORDS DRUMS BASS LEAD

LIVE SEQUENCER

PATTERN 01 02 03 04 05 ✕

< DREAMS >

COMPOSE ARRANGE SETTINGS

LOOP
RECORD/ LOOP RECORD
UNDO
REDO
BPM AJUSTABLE
METRONOME ON/OFF

LECTURE
1 CHORDS
2 DRUMS
3 BASS
4 LEAD
123 BPM

4 PISTES
- ACCORD
- BATTERIE/BEAT
- BASSE
- LEAD (MELODIE)

COMPOSITION VIA SEQUENCER

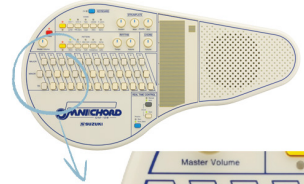
COMPOSITION EN JOUANT "LIVE"

5 PATTERN POUR CHAQUE PISTE

EFFACE LA PATTERN SELECTIONNEE (CONFIRMATION VIA BOITE DE DIALOGUE)

L'ACCORD JOUE (OU DEJA ENREGISTRE) S'AFFICHE ICI. (L'ACCORD SUIVANT S'AFFICHE EN DESSOUS)

CERCLE DES QUINTES
ON APPUIE SUR C, ÇA JOUE L'ACCORD DE DO UN PEU A LA MANIERE DE L'OMNICHORD:



LIVE SEQUENCER

PATTERN 01 02 03 04 05 X

< DREAMS >

COMPOSE ARRANGE SETTINGS

ONGLET DE COMPOSITION

CHOIX DU SON DE PIANO/SYNTHÉ

MENUS HABITUELS OPEN SAVE ""

ONGLET ARRANGEMENT (+ PERFORMANCE LIVE)

L'INTERET DU CERCLE DES QUINTES



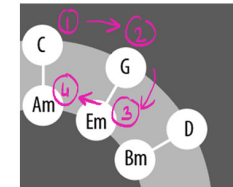
THEORISÉ PAR NIKOLAÏ DILETSKY EN 1679 (MUSICOLOGUE UKRAINIEN),
IL MET EN RELATION TOUTES LES FORMES CLASSIQUES D'ACCORD (MAJEUR/MINEUR).

CERTAINS ACCORDS AYANT UNE OU PLUSIEURS NOTES EN COMMUN, CELA PERMET DE "PREDIR" LA JUSTESSE DE CERTAINES SUITE D'ACCORDS -

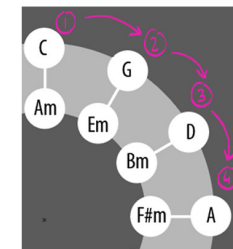
EN PRENANT LES ACCORDS SE SITUANT LE PLUS A PROXIMITÉ LES UNS DES AUTRES, IL EST ASSURÉ QUE CETTE PROGRESSION SONNE JUSTE A L'OREILLE.

CE CERCLE EST ESSENTIELLEMENT UTILISÉ EN COMPOSITION
IL FAUT JUSTE COMPRENDRE SON FONCTIONNEMENT :

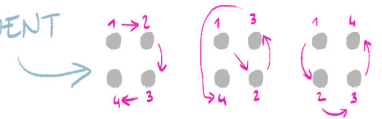
01: LES ACCORDS SITUÉS LES UNS A COTÉ DES AUTRES Iront ENSEMBLE



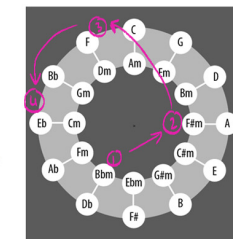
02: LES ACCORDS S'ENCHAINANT SUR UN MEME CERCLE Iront AUSSI ENSEMBLE



03: DE NOMBREUX PATTERN FONCTIONNENT

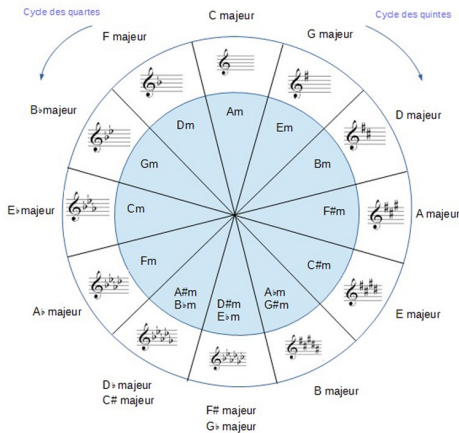


04: IL FAUT EVITER DE SAUTER TROP LOIN DANS LE CERCLE



Le cycle des quintes et des quartes

www.six-cordes.com



EXEMPLE COMMUN

YOUTUBE ↓

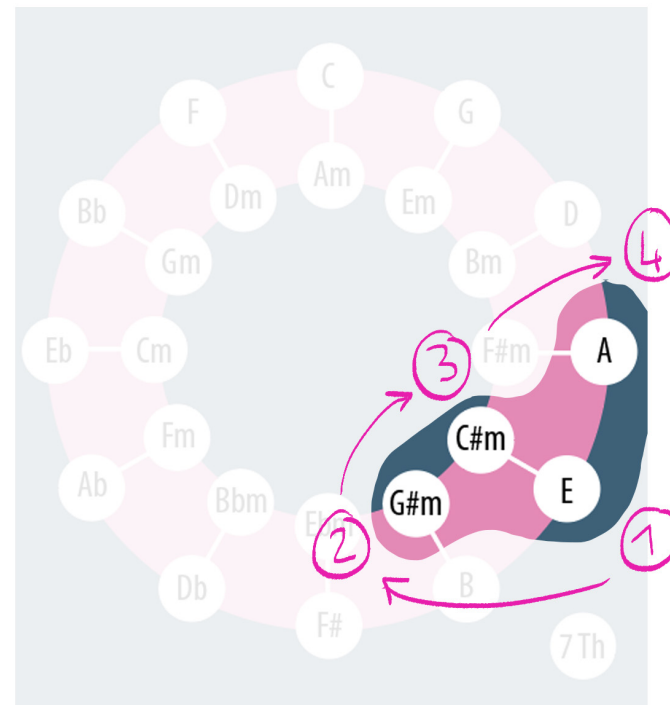
Axis of Awesome - 4 Four Chord Song (with song titles)



- "Four Chords" by Axis of Awesome
- 00:52 - Don't Stop Believing, Journey
 - 00:59 - You're Beautiful, James Blunt
 - 01:09 - Forever Young, Alphaville
 - 01:16 - I'm Yours, Jason Mraz
 - 01:25 - Happy Ending, Mika
 - 01:33 - Amazing, Alex Lloyd
 - 01:42 - Wherever You Will Go, The Calling
 - 01:49 - Can You Feel The Love Tonight, Sir Elton John
 - 01:56 - She Will Be Loved, Maroon 5
 - 02:04 - Pictures of You, The Last Goodnight
 - 02:11 - With or Without You, U2
 - 02:19 - Fall at Your Feet, Crowded House
 - 02:29 - Not Pretty Enough, Kasey Chambers
 - 02:38 - Let it Be, The Beatles
 - 02:42 - Under the Bridge, Red Hot Chili Peppers
 - 02:46 - Horses, Daryl Braithwaite
 - 02:54 - No Woman No Cry, Bob Marley
 - 02:56 - Sex and Candy, Marcy Playground
 - 02:58 - Land Down Under, Men at Work
 - 03:01 - Waltzing Matilda, Banjo Patterson
 - 03:06 - Take on Me / When I Come Around, A-Ha / Green Day
 - 03:21 - Save Tonight / Africa, Eagle Eye Cherry / Toto
 - 03:29 - If I Were a Boy / Self Esteem, Beyonce / The Offspring
 - 03:37 - You're Gonna Go Far Kid, The Offspring
 - 03:45 - You and Your Hand, P!nk
 - 03:53 - Poker Face, Lady Gaga
 - 03:58 - Barbie Girl, Aqua
 - 04:00 - You Found Me, The Fray
 - 04:08 - Don't Trust Me, 30h!3
 - 04:15 - Kids, MGMT
 - 04:23 - Canvas Bags, Tim Minchin
 - 04:33 - Torn, Natalie Imbruglia
 - 04:48 - Superman, Five for Fighting
 - 04:52 - Birdplane, Axis of Awesome
 - 05:02 - Scar, Missy Higgins

QUATRE ACCORDS

→ E - G#m - C#m - A



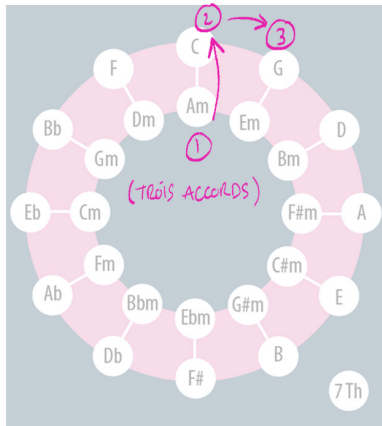
AUTRES EXEMPLES

"SHAKE IT OFF" TAYLOR SWIFT

[Verse 1]

I stay out too late
 Got nothing in my brain
 That's what people say, mmm
 That's what people say, mmm
 I go on too many dates
 But I can't make 'em stay
 At least that's what people say, mmm
 That's what people say, mmm

→ Am - C - G



[Pre-Chorus 1]

But I keep cruisin'
 Can't stop won't stop moving
 It's like I got this music in my mind
 Saying it's gonna be alright

[Chorus]

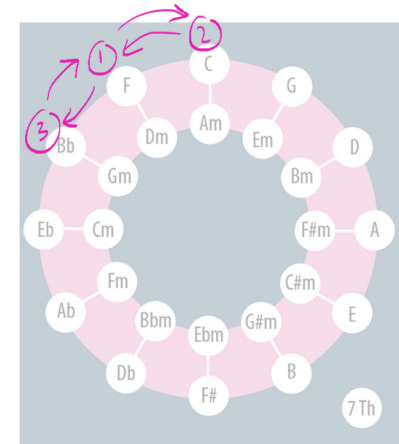
Cause the players gonna play, play, play, play, play
 And the haters gonna hate, hate, hate, hate, hate baby
 I'm just gonna shake, shake, shake, shake, shake
 Shake it off, I shake it off
 Heart breakers gonna break, break, break, break, break
 And the fakers gonna fake, fake, fake, fake, fake baby
 I'm just gonna shake, shake, shake, shake, shake
 Shake it off, I shake it off

F - C - F - Bb - F - C - F ↘

"HEY JUDE" BEATLES

[Verse 1]

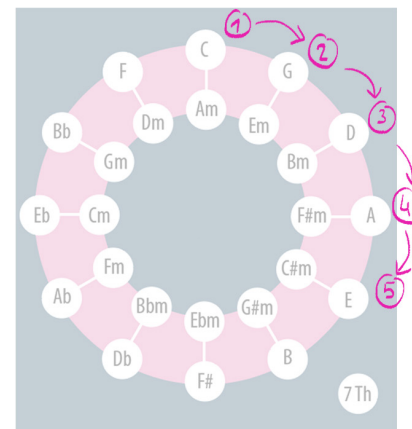
Hey Jude, don't make it bad
 Take a sad song and make it better
 Remember to let her into your heart
 and then you can start to make it better



"HEY JOE" J. HENDRIX → C - G - D - A - E

[Verse 1]

Hey Joe, where you goin' with that gun in your hand?
 Hey Joe, I said where you goin' with that gun in your hand,



PISTE CHORDS
MODE 'SEQUENCER'

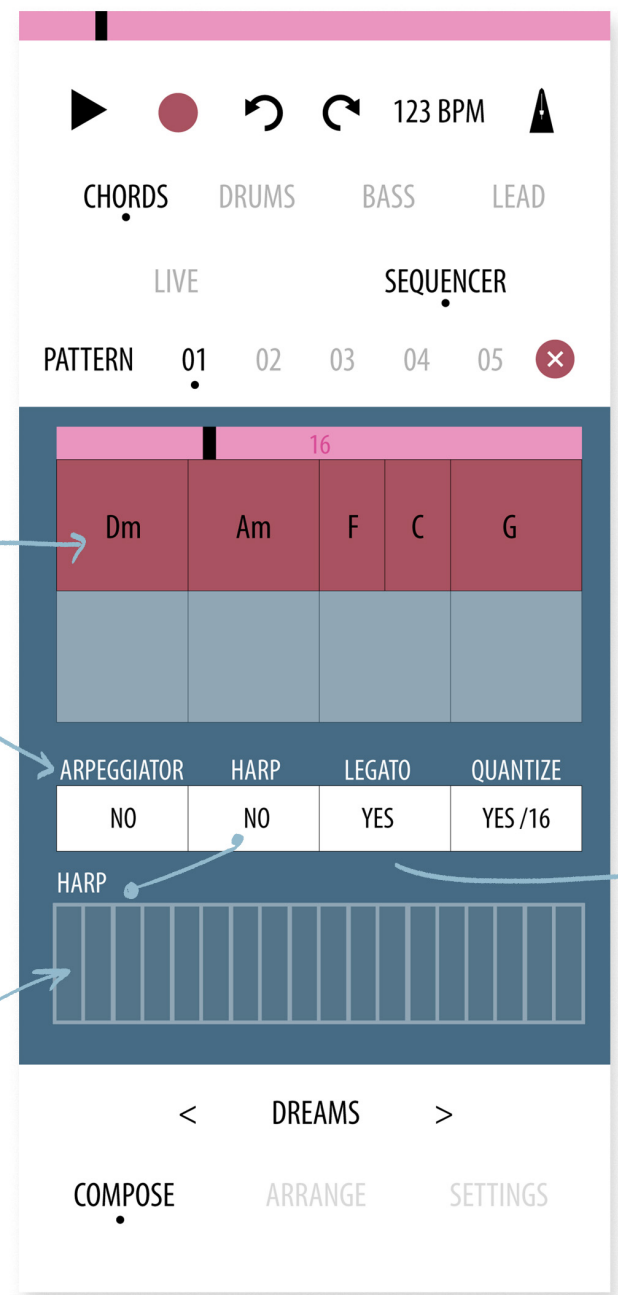
CE QUI A ETE JOUE
EN MODE 'LIVE'
SE RETROUVE DANS
LE MODE SEQUENCER

QUANTISE EN 16th

ARPEGGIATOR :
DECOMPOSE LES ACCORDS
EN SUITE DE NOTES



HARP :
UTILISE LE PEIGNE
A LA MANIERE D'UN
OMNICHORD.



LEGATO :
ALLONGE LES NOTES DES ACCORDS
POUR EVITER LES SILENCES



DRUMS/LIVE

QUATRE PAD VIRTUELS

SNARE = CAISSE CLAIRE

HIHAT = CHARLESTON FERMÉ

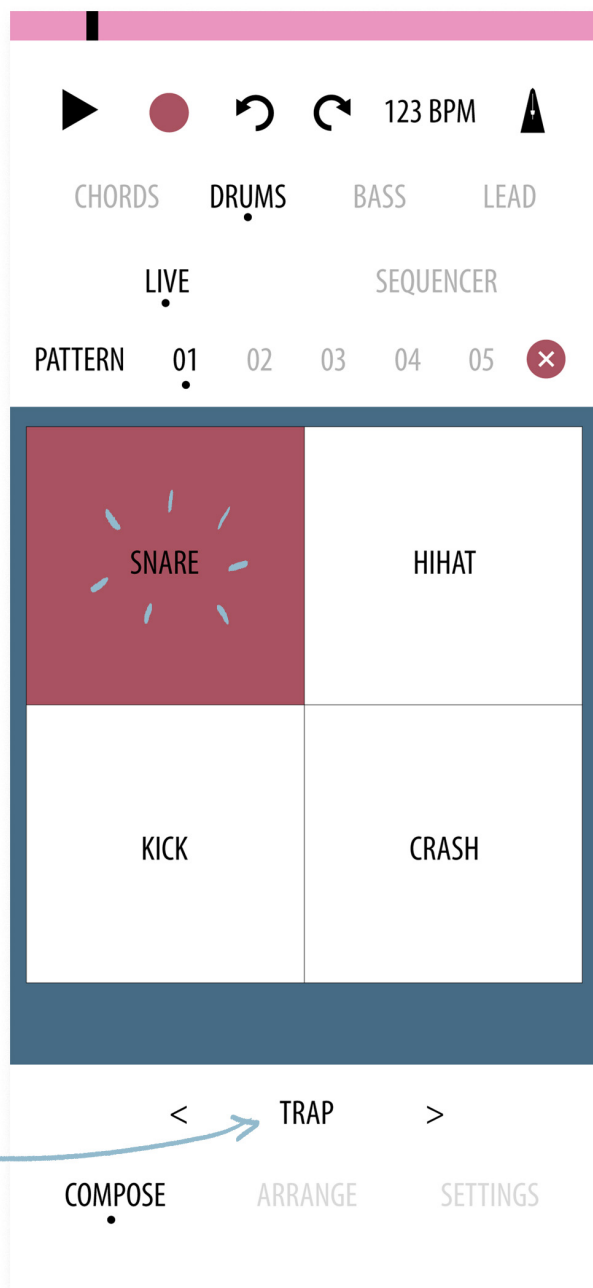
KICK = GROSSE CAISSE

CRASH = CYMBALE

ÇA SE JOUE SIMPLEMENT
EN APPUYANT BRIEVEMENT
DESSUS. STYLE FINGER DRUMMING

BONNE APPLI DE REF:
KOALA SAMPLER

NOM DU KIT
DE BATTERIE
LOADE



DRUMS/ SEQUENCER

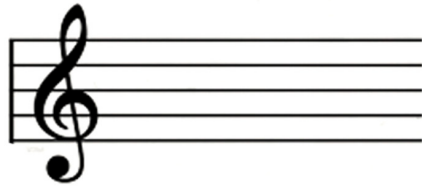
CE QUI A ETE JOUÉ
EN LIVE SE RETROUVE ICI
- OU - LA COMPO PEUT
AUSSI SE FAIRE DIRECTEMENT
ICI.

DE BASE,
JE METTRAIS
1 SEULE
MESURE

MAIS JE
RAJOUTERAIS
L'OPTION
"2 MESURES"

The screenshot shows a music production app interface for the drums sequencer. At the top, there are playback controls (play, stop, undo, redo) and a tempo of 123 BPM. Below that are tabs for CHORDS, DRUMS (selected), BASS, and LEAD. Under the DRUMS tab, there are options for LIVE and SEQUENCER (selected). A pattern list shows 'PATTERN 01' selected, with options 02, 03, 04, 05, and a close button. The main area is a grid for pattern 01, with a pink bar at the top indicating measure 16. The grid has rows for KICK, SNARE, HIHAT, CRASH, MUTE, KICK, SNARE, HIHAT, and CRASH. The first four rows show a drum pattern: KICK in measures 1, 3, and 5; SNARE in measure 4; HIHAT in all measures. The MUTE row is active in measure 1. The bottom of the screen has navigation buttons: < TRAP >, COMPOSE (selected), ARRANGE, and SETTINGS.

BASSE



CLÉ DE SOL
SCHEMATISÉE

NOTES
BASSE
SUPPLÉMENTAIRES

MODIFICATEURS
EQUIVALENTS A
CEUX MIS DANS
CHORDS/SEQUENCER

CHORDS DRUMS **BASS** LEAD

LIVE

PATTERN 01 02 03 04 05

16

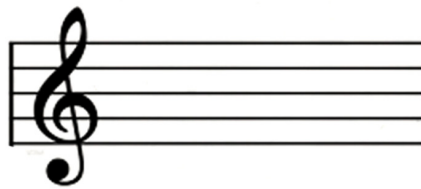
ARPEGGIATOR	OPTIONNEL	LEGATO	QUANTIZE
NO	NO	YES	16

< MOOG >

COMPOSE ARRANGE SETTINGS

LA GAMME PROPOSÉE
EST LIMITÉE.
ELLE CORRESPOND HARMONIQUEMENT
A LA SUITE D'ACCORDS QUI A ÉTÉ
RENTRÉE DANS "CHORDS"

CHOIX DU
SON DE BASSE



LEAD
MELODIE/NOTE AIGUE

CUE
DE SOL

ARPEGGIATOR	OPTIONNEL	LEGATO	QUANTIZE
NO	NO	YES	16

At the bottom of the screen, there are navigation options: < LEAD 01 >, COMPOSE, ARRANGE, and SETTINGS.

IDEM
LA GAMME PROPOSÉE
EST LIMITÉE.
ELLE CORRESPOND HARMONIQUEMENT
A LA SUITE D'ACCORDS QUI A ÉTÉ
RENTRÉE DANS "CHORDS"

CHOIX DU SON
DE LEAD

ARRANGE

C'EST LA PARTIE SEQUENCER GENERAL

C'EST ICI QU'ON INDIQUE L'ENCHAÎNEMENT DES PATTERNS QUI ONT DÉJÀ ÊTÉ COMPOSÉES.

UN PEU À LA MANIÈRE DE ABLETON LIVE, ON PEUT LANCER DES CLIPS SEUL. EX: (A)

ON PEUT LANCER DES CLIPS DIFFÉRENTS. EX: (B)

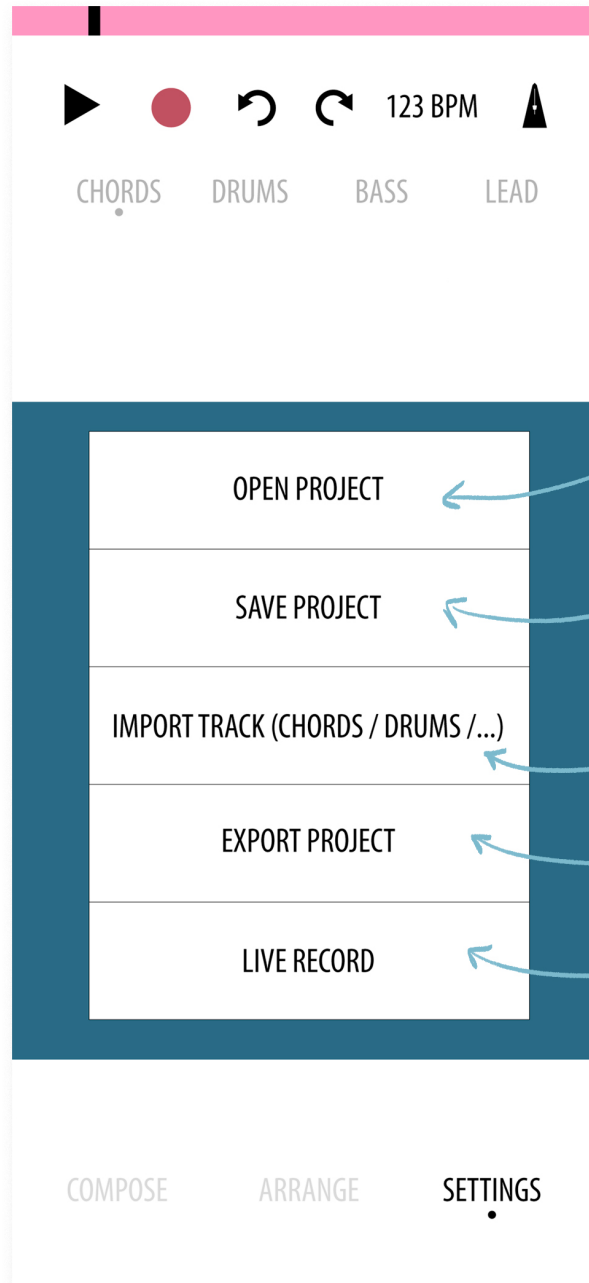
ON PEUT LANCER UNE LIGNE COMPLÈTE DE CLIPS. EX: (C)

The screenshot shows the 'ARRANGE' view in Ableton Live. At the top, there are playback controls (play, stop, undo, redo) and a tempo of 123 BPM. Below that are track names: CHORDS, DRUMS, BASS, and LEAD. A 'PATTERN' bar shows patterns 01 through 05, with 01 selected. The main area is a grid with columns for CHORDS, DRUMS, BASS, and LEAD, and rows for patterns 01 through 05. Pattern 01 is highlighted in yellow and contains a red play button. Pattern 02 contains '01' in the DRUMS column and '01 (B)' in the BASS column. Pattern 03 contains '01 (B)' in the CHORDS column and '01' in the DRUMS and BASS columns. Pattern 04 contains '01 (B)' in the DRUMS column. Pattern 05 contains '01' in the DRUMS, BASS, and LEAD columns. A red line labeled 'C' spans across patterns 02, 03, 04, and 05. At the bottom, there are volume faders for each track, each with a blue 'X' icon. The bottom navigation bar has 'COMPOSE', 'ARRANGE', and 'SETTINGS' tabs, with 'ARRANGE' selected.

PATTERN	CHORDS	DRUMS	BASS	LEAD
01	(A)			
02		01	01 (B)	01
03	01 (B)	01	01	01
04		01 (B)		
05		01	01	01

(X) VOLUME DE CHAQUE PISTE

SETTINGS
↳ MENUS CLASSIQUES



OUVRIR UN PROJET

SAUVE LE PROJET EN COURS

IMPORTER UNE OU PLUSIEURS
PISTES DANS LE PROJET EN COURS

EXPORTER EN MIDI

ENREGISTRER LA PERFORMANCE
LIVE EN DIRECT (WAV/MP3)